

ErgoDeck™ is an Ergonomic Flooring System

**3 YEAR
WARRANTY**



ErgoDeck™ is an Ergonomic Flooring System engineered to adapt the work environment to the needs of the worker. The substantial, professional grade **18" x 18"** modular tiles create an ergonomic floor above the regular floor—designed to enhance the comfort and productivity of standing workers. Once installed, **ErgoDeck™** is totally seamless, without maintenance or safety headaches.

ErgoDeck™ remains interlocked even under heavy traffic conditions.

Our patented, integral **LockSafe®** Interlocking System connects on all four sides for a totally flexible layout. **ErgoDeck™** tiles quickly and accurately align for a neat, clean installation. Once connected, they remain together despite the enormous pressure of constant use. Despite this "permanent" connection, tiles can be separated and then reconnected to create a new configuration or to replace a damaged tile.

ErgoDeck™ is available with attachable 6" wide yellow safety ramps.

These high visibility ramps are 18" long with a gradual slope and 1/16" thick friction bars. **ErgoDeck™** can be anchored to eliminate any movement or shifting. The safety ramps have **three (3) countersunk holes**, which accommodate anchor bolts **for permanent installations**.

The **ErgoDeck™** is specifically designed for **heavily trafficked areas** and will accommodate **carts up to 64 psi**, or the equivalent of a 300 lb. cart with 4" wheels. **ErgoDeck™** Tiles have slightly textured, flat surface designs. This provides excellent traction while facilitating workflow and wheel traffic. No product withstands such heavy use while providing ergonomic benefits like **ErgoDeck™**.

ErgoDeck™ Open Grid No. 560 – has a large drainage design to allow fluids or debris to freely flow through.

ErgoDeck™ Solid No. 562 – has a solid surface for use in mostly dry areas, where ease of maintenance is a priority.

Both styles are available in

General Purpose Applications – defined as dry or areas with water or debris. Use the **ErgoDeck™ Open No. 560** or the **ErgoDeck™ Solid No. 562**

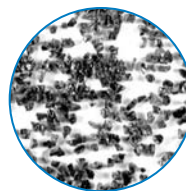
Areas with Greases and Oils – Use the **ErgoDeck™ Open** with **GritWorks!® No. 561** or the **ErgoDeck™ Solid** with **GritWorks!® No. 563**. They far surpass OSHA's recommended coefficient of friction (COF) for walking surfaces. Visit www.wearwell.com for specific chemical resistance information.



ErgoDeck™ Open Grid No. 560
Larger openings, better flow-through.



ErgoDeck™ Solid No. 562
Low maintenance, ideal for use in areas where small parts drop to the floor.



Both versions available with GritWorks!®

GritWorks!® surface provides almost 40% more traction than OSHA recommends in wet areas

Performance: ULTIMATE**Stock Sizes**

Size	Open Grid	Solid Grid
Case of 10 Tiles	560.78X18X18BK-CS10 560.78X18X18YL-CS10 With GritWorks!®	562.78X18X18BK-CS10 562.78X18X18YL-CS10 With GritWorks!®
Case of 10 Tiles	561.78X18X18BK-CS10	563.78X18X18BK-CS10

Non-Stock Sizes

Size	Open Grid	Solid Grid
Single Tile	560.78X18X18BK 560.78X18X18YL With GritWorks!®	562.78X18X18BK 562.78X18X18YL With GritWorks!®
Single Tile	561.78X18X18BK	563.78X18X18BK

Ramp and Corner Accessories**Stock Sizes**

Part Number	Size
560.78X6X18BK-CS10	Case of 10 Ramps
560.78X6X18YL-CS10	Case of 10 Ramps
560.78X6X15X15BK-CS4	Case of 4 Outside Corners
560.78X6X15X15YL-CS4	Case of 4 Outside Corners

Non-Stock Sizes

Part Number	Size
560.78X6X18	Single Ramp
560.78X6X15X15	Single Outside Corner
560.78X6X9X9	Single Inside Corner

Specify Color:

Black (BK), Black/Yellow (YL) when ordering.



Mats with Edging or unique configurations are available in 3" increments. Some mats may require several sections. Please call for pricing.

**Ramp Edging System**

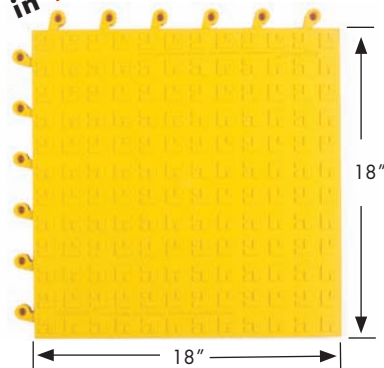
Ramp



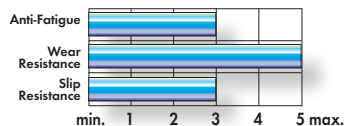
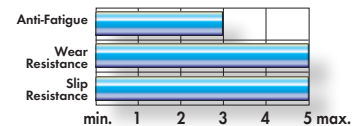
Outside Corner



Inside Corner

**Now Available
in Yellow**

Each tile has six (6) LockSafe® connectors per side for a totally secure interlock.

No. 560/562**No. 561/563****Specs**

Compound
COF Per ASTM F1677
Durometer
Tabor Abrasion
Load Capacity
Flammability
UV and Ozone
Thickness
Color

No. 560/562

100% PVC
.65 Dry .42 Wet per ASTM F1677
80 per ASTM D2240
<1% lost @ 1,000 cycles per Fed Std. 191
64 psi
"A" Rating per MVSS 302
Excellent per ASTM D1171
7/8" thickness
Black (BK)

With GritWorks!® No. 561/563

100% PVC
1.1 Dry 1.0 Wet per ASTM F1677
80 per ASTM D2240
<1% lost @ 1,000 cycles per Fed Std. 191
64 psi
"A" Rating per MVSS 302
Excellent per ASTM D1171
7/8" thickness
Black (BK)